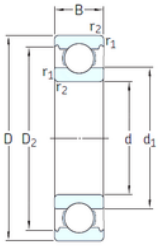




## IMPORTED BEARING OF AMERICA CORP.



VA201



2Z/VA201



2Z/VA208



2Z/VA228

25 mm x 47 mm x 12 mm 25 mm x 47 mm x 12 mm SKF 6005/VA201 deep groove ball bearings

Bearing No. 6005/VA201

6005/VA201 Bearing 2D drawings and 3D CAD models

Size	25x47x12 mm
Bore Diameter	25 mm
Outer Diameter	47 mm
Width	12 mm
d	25 mm
D	47 mm
B	12 mm
C	12 mm
d1	32 mm
r1 min.	0,6 mm
r2 min.	0,6 mm
D2	42,2 mm
Weight	0,078 Kg
Temperature -	30 to +250 °
Basic static load rating (C0)	6,55 kN
Category	Single Row Ball Bearings
Inventory	0.0
Manufacturer Name	SKF
Minimum Buy Quantity	N/A
Weight / Kilogram	0.082
EAN	7316570318661
Product Group	B00308
Enclosure	Open
Precision Class	ABEC 1   ISO P0
Maximum Capacity / Filling Slot	No



## IMPORTED BEARING OF AMERICA CORP.

Rolling Element	Ball Bearing
Snap Ring	No
Internal Special Features	Polyalkylene Glycol/Graphite Mixture Filled
Cage Material	Steel
Internal Clearance	C0-Medium
Inch - Metric	Metric
Long Description	25MM Bore; 47MM Outside Diameter; 12MM Outer Race Width; Open; Ball Bearing; ABEC 1   ISO P0; No Filling Slot; No Snap Ring; Polyalkylene Glycol/Graphite Mixture Filled Internal Special Features; C0-M
Other Features	Deep Groove   Extreme Temperature Variant
Category	Single Row Ball Bearing
UNSPSC	31171504
Harmonized Tariff Code	8482.10.50.68
Noun	Bearing
Keyword String	Ball
Manufacturer URL	<a href="http://www.skf.com">http://www.skf.com</a>
Manufacturer Item Number	6005/VA201
Weight / LBS	0.078
Inner Race Width	0 Inch   0 Millimeter
Outside Diameter	1.85 Inch   47 Millimeter
Bore	0.984 Inch   25 Millimeter
Outer Race Width	0.472 Inch   12 Millimeter
bore diameter:	25 mm
static load capacity:	6.55 kN
outside diameter:	47 mm
precision rating:	Not Rated
overall width:	12 mm



## IMPORTED BEARING OF AMERICA CORP.

finish/coating:	Uncoated
bore type:	Round
cage material:	Steel
closure type:	Open
outer ring width:	12 mm
row type & fill slot:	Single Row Non-Fill Slot
fillet radius:	0.6 mm
snap ring included:	Without Snap Ring
maximum rpm:	250 RPM
internal clearance:	C0
series:	60
operating temperature range:	-20 to +480 ° F
resistance features:	Corrosion Resistant, Extreme Temperature
$d_1$	32 mm
$D_2$	42.2 mm
$r_{1,2}$ min.	0.6 mm
$d_a$ min.	28.2 mm
$D_a$ max.	43.8 mm
$r_a$ max.	0.6 mm
Basic dynamic load rating C	11.9 kN
Basic static load rating $C_0$	6.55 kN
Limiting speed	250 r/min
Limiting temperature T max.	250 ° C
Mass bearing	0.078 kg